


Java 8 installation and Configuration for ASYCUDA World


1. Go to the website

<http://www.oracle.com/technetwork/java/javase/downloads/jre8-downloads-2133155.html> and download the Java Runtime Environment 8 that is compatible with your operating system.

- a. If your computer has a 32 bit operation system, you should download "Windows X86 offline 53.81 MB **jre-8u121-windows-i586.exe**" shown below:

Windows x86 Offline	53.81 MB	 jre-8u121-windows-i586.exe
---------------------	----------	--

- b. If your computer has a 64 bit operating system, you should download "Windows X64 offline 61.18 MB **jre-8u121-windows-x64.exe**", shown below.

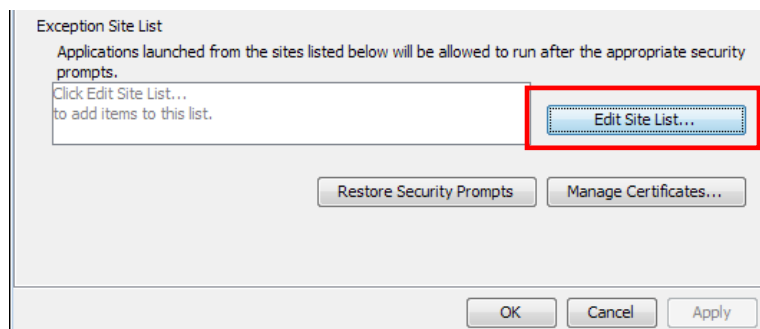
Windows x64 Offline	61.18 MB	 jre-8u121-windows-x64.exe
---------------------	----------	---

2. Once the download is complete, click the executable file and click the install button to begin the installation

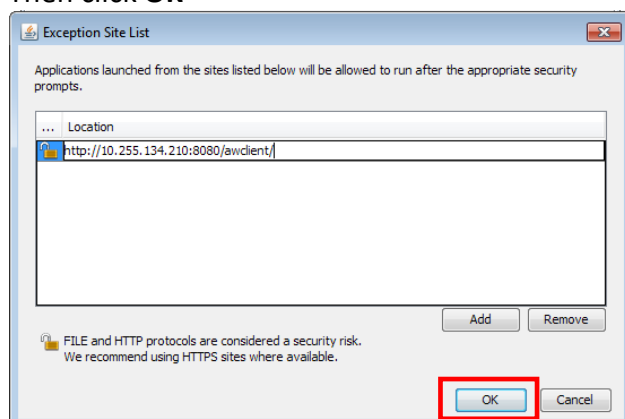


3. Once successfully installed, you will receive the success like the one shown above. Now go to your **Start** menu -> **All Programs** -> **Java** and click on **Configure Java**

4. The Java Control Panel window will open up. Now select the **Security Tab** and click on **Edit Site List**



5. A pop up window like the one below will appear. Click **Add** and enter the ASYCUDA World address (in our case it is:
Internal Users: <http://aworldprototype:8080/>
External Users: <http://asyworld.gov.vu>
Then click **OK**



6. A **security warning** window will open up like the one below, click **Continue** and click **OK** on the Java Control Panel Window.
7. Now go to your browser and enter the AYSCUDA World Address:
- For Internal users: http://aworldprototype:8080/index_internal.html
 - For External users: <http://asyworld.gov.vu>
- To access the site. Click on the **FULL Desktop** heading and this will download the Java Network Launch Protocol File (jnlp) file.
8. Open the jnlp file to log into Asycuda World or see the next documentation on “How to log into Asycuda World”.